



EXPLORING THE UNEXPECTED

In SOFTLINE 2026 Moodboard, we aim to further explore the human-driven narrative, shifting our focus from purely functionality and product goals to emotions and feelings.

Our goal is to create a moodboard that is optimistic, human, clear, and warm. A source of inspiration for the year ahead, especially in a time of uncertainty. It will emphasise the connection between SOFTLINE products and their users, highlighting the emotional and human-centered experience of our designs.



FEEL

Every touch, every glance, and every sense creates a moment of connection. It's about more than texture or color: it is the emotional resonance that makes a space, an object, or a material feel like it belongs to you.

A natural, sensory connection between the product and the user. Prioritising comfort, warmth, and tactile richness, evoking calm and intimacy.

This theme highlights the most inviting, human, and relaxing items in the collection. Fabrics and color palettes are defined by rich textures, natural tones, and a serene, neutral overall aesthetic.



Fabrics & Colours

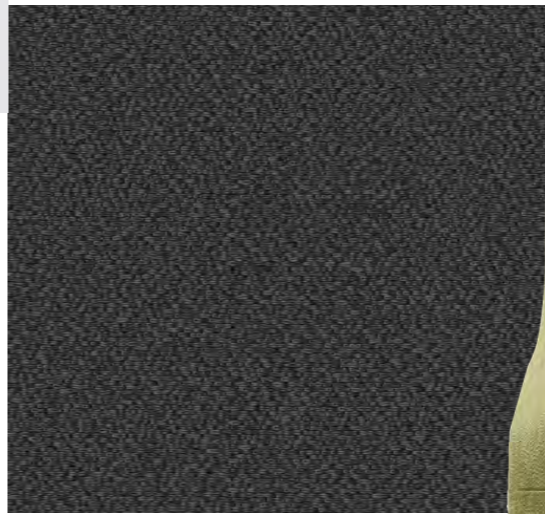
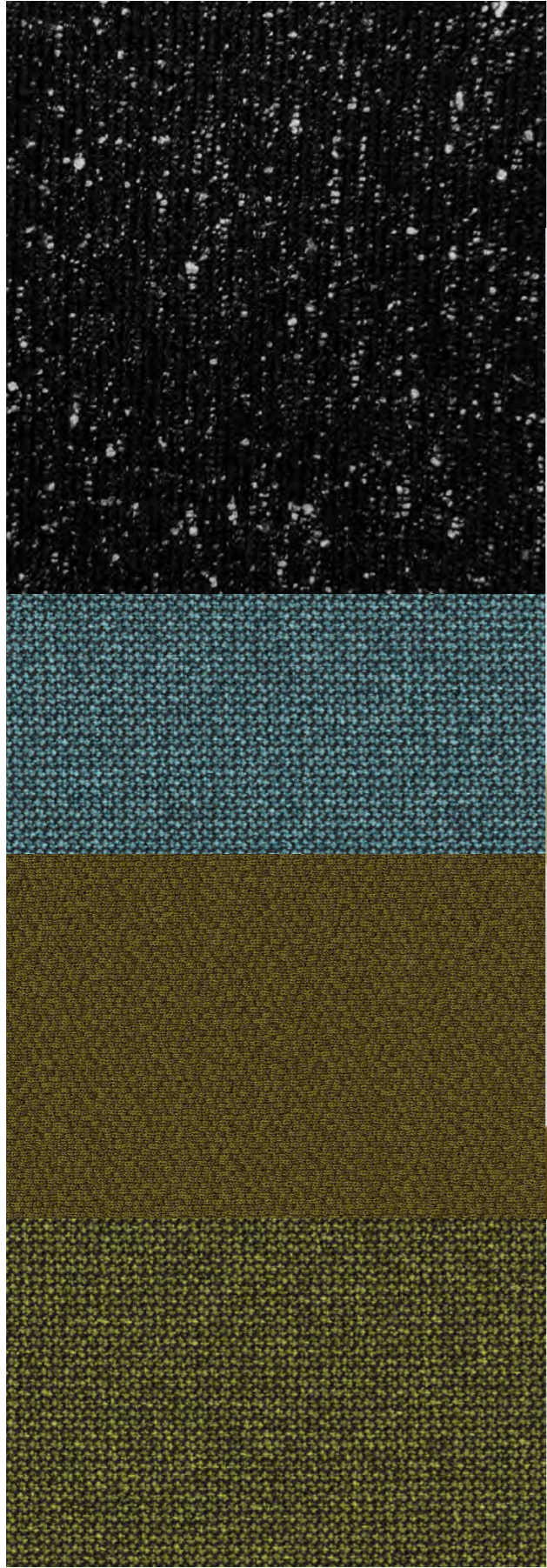




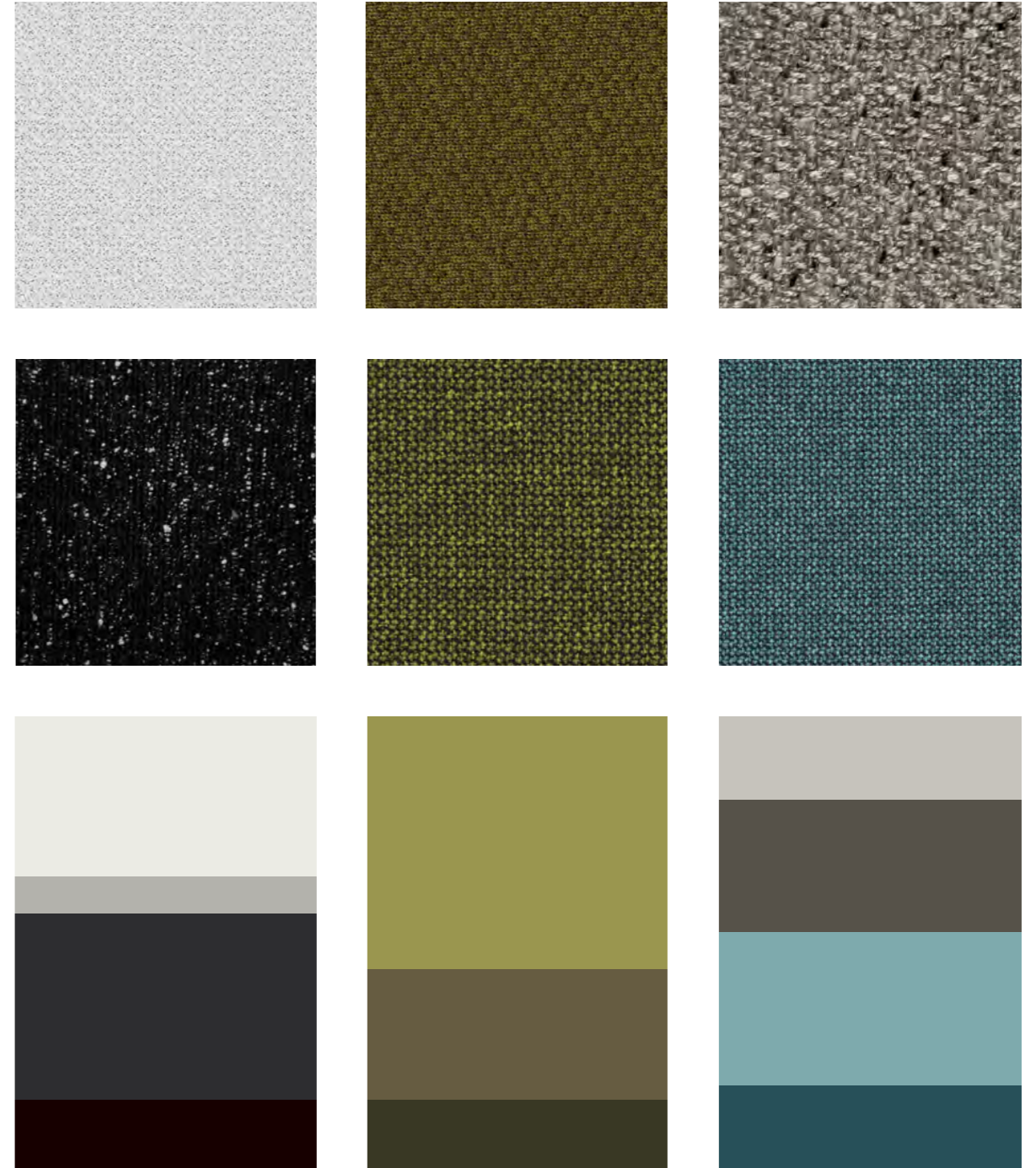
PLAY

Play invites imagination and creativity into every piece of SOFTLINE collection. It's about experimenting with shapes, colors, and modules in unexpected ways, turning everyday objects into experiences that delight and surprise. This theme encourages curiosity, sparks joy, and transforms spaces into environments where exploration and interaction are celebrated.

It's a reminder that design can be whimsical, dynamic, and full of personality, inspiring users to engage, create, and imagine beyond the ordinary.



Fabrics & Colours



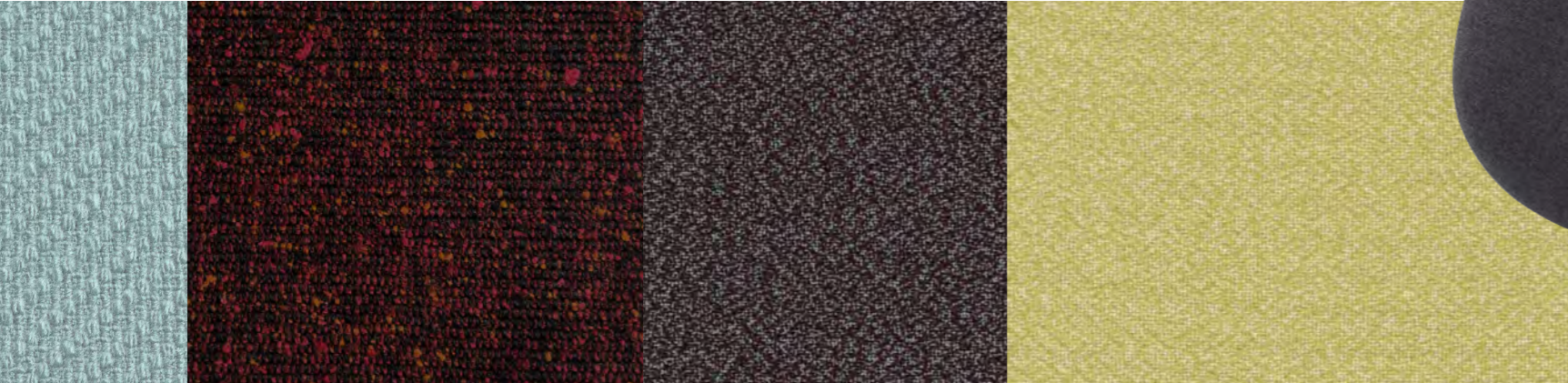


DARE

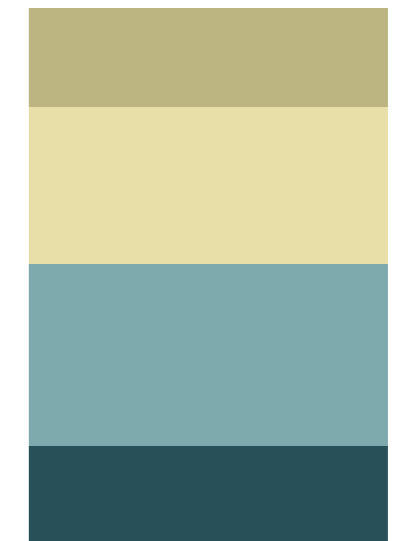
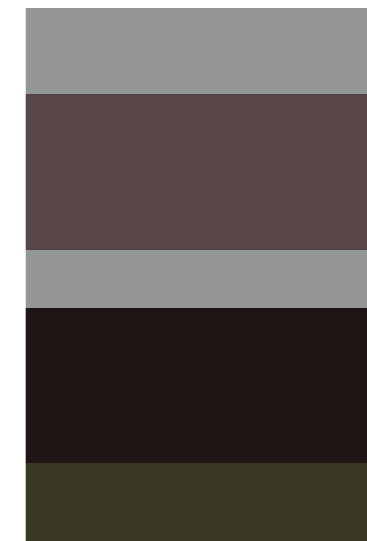
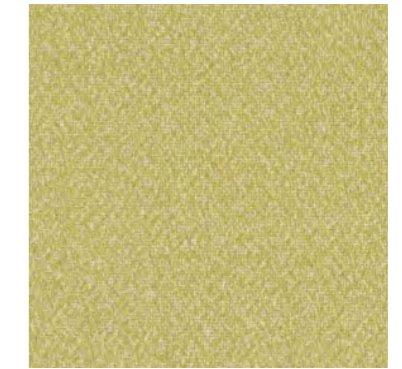
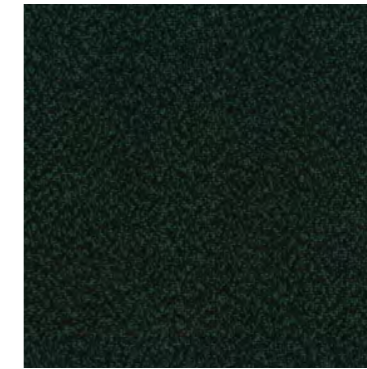
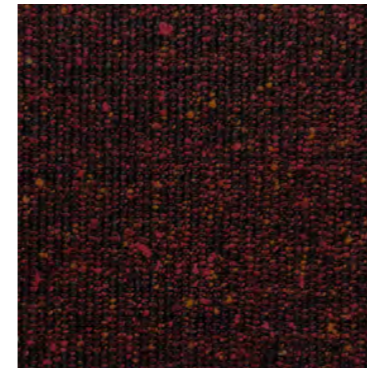
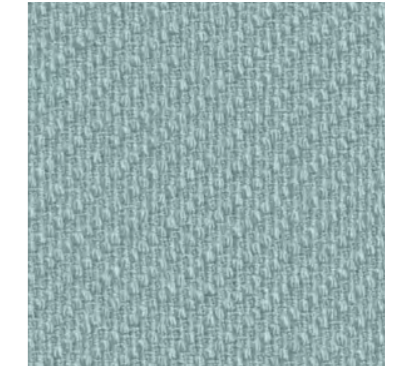
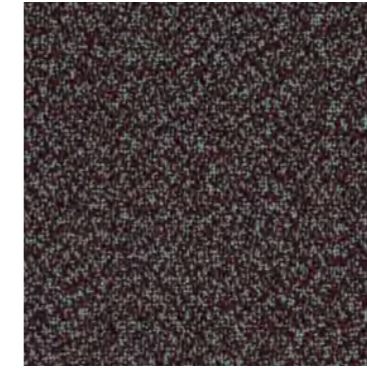
This theme is about pushing boundaries and questioning what is expected.

It celebrates bold choices, unexpected contrasts, and the courage to explore new combinations of materials, colors, and forms.

Embraces experimentation and discovery, transforming furniture into statements that challenge conventions and invite new ways of seeing, living, and experiencing design.



Fabrics & Colours



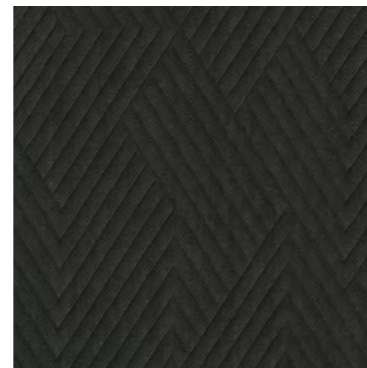




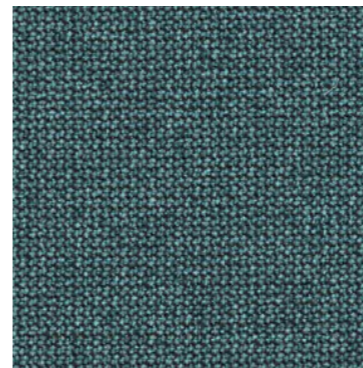
MAREMOSSO 995 - KB



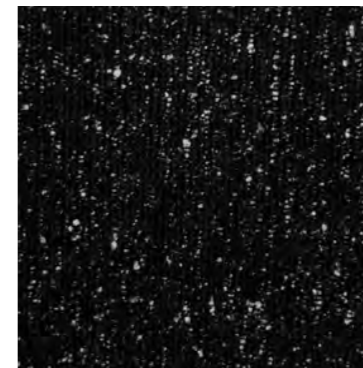
MIZMAZE 212



MIZMAZE 392



RENEWED LOOP 67131



BOLGHERI LNE 11



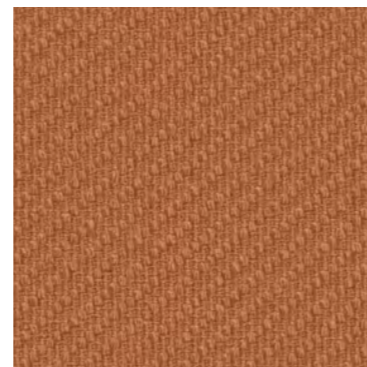
TWINWOOL 06



MARSHMALLOW 05/8



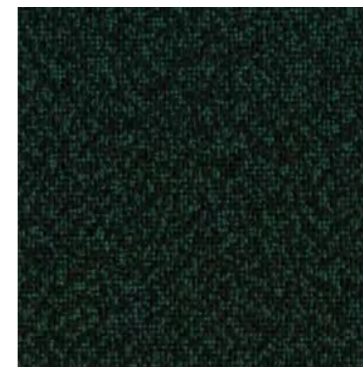
MYLLA 221



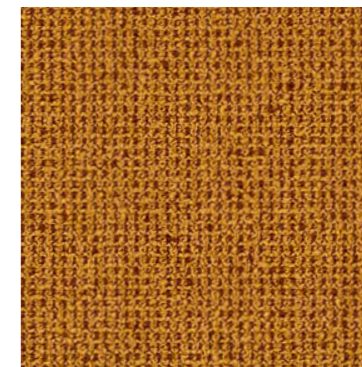
UMI 63155



TWINWOOL 14



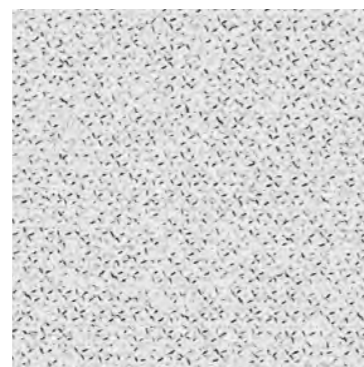
TWINWOOL 58



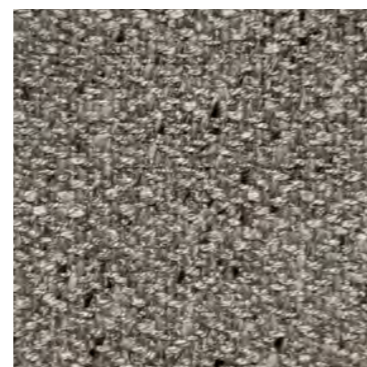
GRAIN 62121



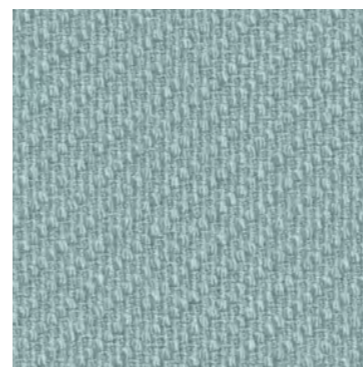
GRAIN 63118



GRAIN 60300



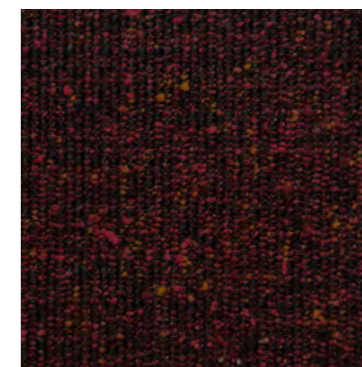
AGAMOTTO 07



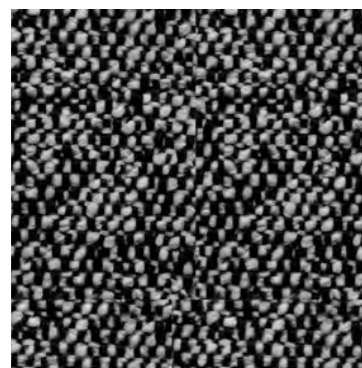
UMI 67141



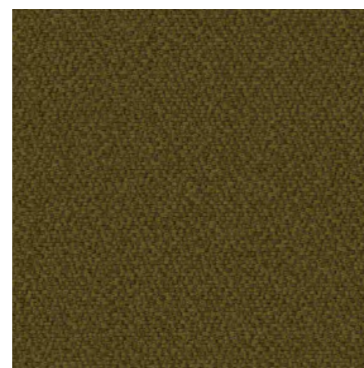
BOLGHERI LGG60



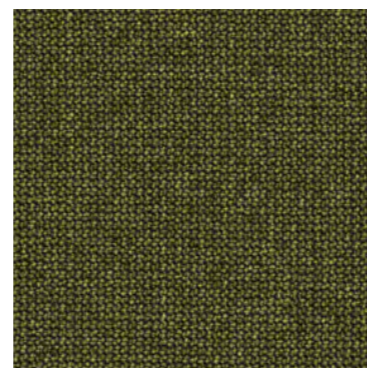
BOLGHERI LNE 13



ALTAI 01 - 33



MYLLA 971



RENEWED LOOP 62140

SOFT LINE

SOFTLINE A/S

Kidnakken 5
DK-4930 Maribo
Denmark
T: +45 5416 0680
info@softline.dk

Instagram: #softlinefurniture

www.softlinefurniture.com

©2026 SOFTLINE A/S