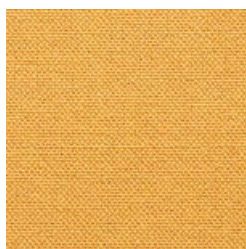


## ECO COTTON



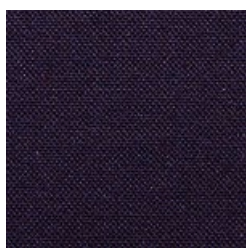
512



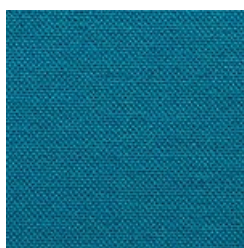
513



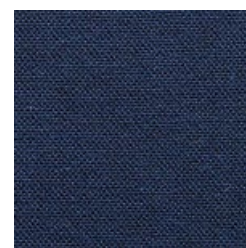
516



517



515



518



514



522



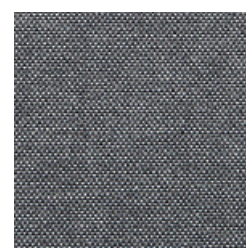
511



523



519



520



521

## ECO COTTON

### EN

Composition: 75% Cotton, 20% Poly Acrylic, 5% Other Fibers  
Maintenance: Vacuum regularly or professional Dry-clean  
Abrasion Resistance: 40.000 Martindale cycles  
Flammability: EN 1021 part 1&2

### DE

Zusammensetzung: 75% Baumwolle, 20% Poly Akryl, 5% Andere Faser  
Reinigung: Regelmässig staubsaugen. Professionelle Trockenreinigung  
Scheuerfestigkeit: 40.000 Martindale  
Feuerschutz: EN 1021 part 1&2

### FR

Composition: 75% Coton, 20% Polyacryl, 5% Autres fibres  
Nettoyage: Aspirer régulièrement. Nettoyage à sec professionnel  
Résistance à l'abrasion: 40.000 cycles Martindale  
Normes au feu: EN 1021 source d'ignition 1&2

### DK

Materiale: 75% Bomuld, 20% Poly Akryl, 5% Andre Fibre  
Rengøring: Støvsug regelmæssigt eller professionel rens  
Slidstyrke: 40.000 Martindale  
Flammesikring: EN 1021 part 1&2