

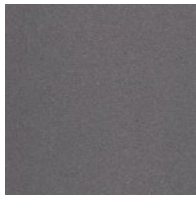
Divina 3

**kvadrat**

Divina 3



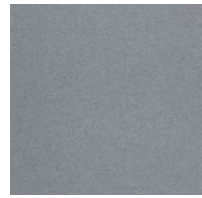
684



691



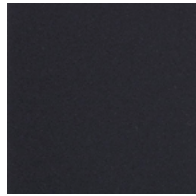
171



173



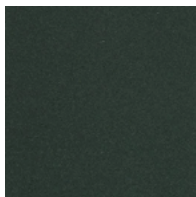
676



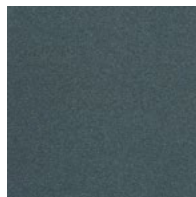
191



154



384



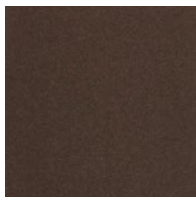
181



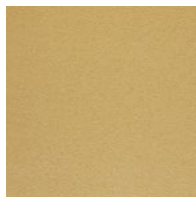
426



356



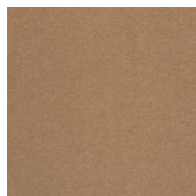
393



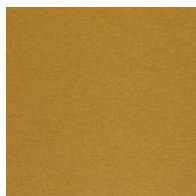
236



224



334



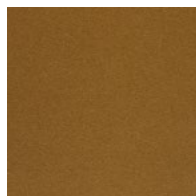
246



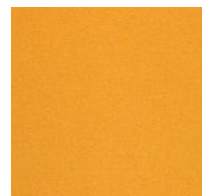
462



106



346

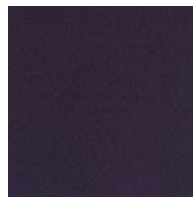


444

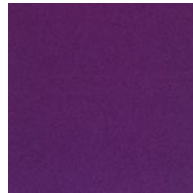
Divina 3



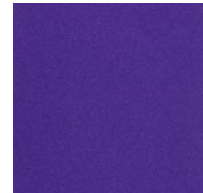
636



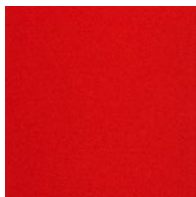
376



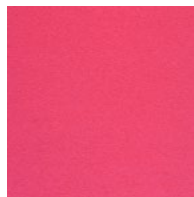
696



692



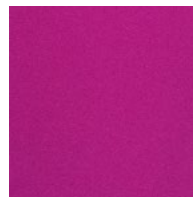
623



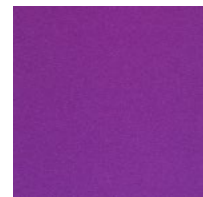
626



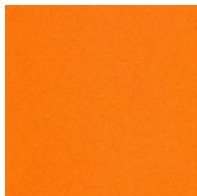
562



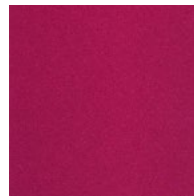
662



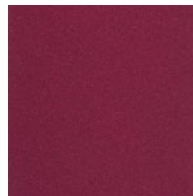
666



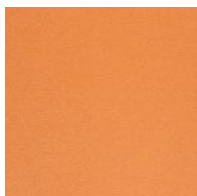
542



652



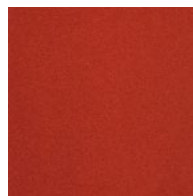
671



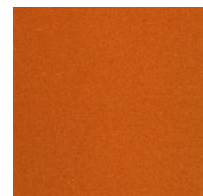
526



536



584



552

Divina 3



756



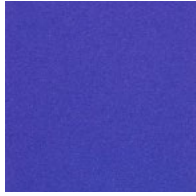
742



712



686



782



944



984



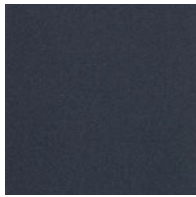
791



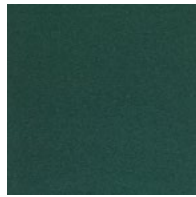
846



856



793



886



876



893



936



922



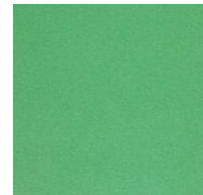
826



836



956



966

## Divina 3

Designed by Finn Sködt

### DK

**Anvendelse** Kontorer, hoteller, institutioner, private indretninger.

**Beskrivelse** 100% ny uld. Bredde ca. 150 cm. Vægt ca. 840 g/lbm. Stykfarvet. I lyse farver kan fremmede fibre forekomme. Nuanceforskel kan forekomme.

### Ægkant ↔

**Slidstyrke:** Ca. 45.000 slidbevægelser efter Martindale metoden EN ISO 12947. **Lysægthed** (ISO) 5-7. **Pilling** (EN ISO) 3. **Gnidægthed** (ISO) tør 4-5, våd 4. **Flammesikring:** EN 1021-1/2 ignition source 0-1. BS 5852 Part 1. BS 5852 Crib 5. DIN 4102 B2. ÖNORM B1 / Q1. UNI 9175 11M. NF D 60 013. US Cal. Bull. 117-2013. NFPA 260. AS/NZS 1530.3. IMO FTP Code 2010:Part 8. EN 13501, C-s1, d0. (Kopi af testrapport kan rekvireres).

**Vedligeholdelse** Se ISO symboler. Strygning uden damp.

### UK

**Application** Offices, hotels, institutions, domestic use.

**Description** 100% new wool. Width app. 59 inches (150 cm). Weight app. 840 g/lin.m. Piece dyed. Foreign fibres may occur in light colours. Colour differences may occur.

### Selvedge ↔

**Abrasion:** App. 45,000 rubs acc. to the Martindale method EN ISO 12947.

**Lightfastness** (ISO) 5-7. **Pilling** (EN ISO) 3.

**Fastness to rubbing** (ISO) dry 4-5, wet 4.

**Flame resistance:** EN 1021-1/2 ignition source 0-1. BS 5852 Part 1. BS 5852 Crib 5. DIN 4102 B2. ÖNORM B1 / Q1. UNI 9175 11M. NF D 60 013. US Cal. Bull. 117-2013. NFPA 260. AS/NZS 1530.3. IMO FTP Code 2010:Part 8. EN 13501, C-s1, d0. (Copy of test report available).

**Care** Please see the ISO symbols. Iron without steam.

### DE

**Anwendungsbereich** Büros, Hotels, Objectbereich, privaten Wohnbereich.

**Beschreibung** 100% Schurwolle. Breite ca. 150 cm. Gewicht ca. 840 g/lfd.m. Stückgefärbt. In hellen Farben können Fremdfasern vorkommen. Farbunterschiede können vorkommen.

### Webkant ↔

**Scheuerfestigkeit:** Ca. 45.000 Scheuerhübe gemäss der Martindale Methode EN ISO 12947. **Lichtechtheit** (ISO) 5-7. **Pilling** (EN ISO) 3. **Reibechtheit** (ISO) trocken 4-5, nass 4.

**Flammenschutz:** DIN 4102 B2. ÖNORM B1 / Q1. EN 1021-1/2 ignition source 0-1. BS 5852 Part 1. BS 5852 Crib 5. UNI 9175 11M. NF D 60 013. US Cal. Bull. 117-2013. NFPA 260. AS/NZS 1530.3. IMO FTP Code 2010:Part 8. EN 13501, C-s1, d0. (Kopie von Prüfungsbericht verfügbar).

**Pflege** Sehen Sie bitte die ISO Pflegesymbole. Ohne Dampf bügeln.

### NL

**Toepassing** Kantoren, hotels, instellingen, de privésfeer.

**Omschrijving** 100% scheerwol. Breedte ca. 150 cm. Gewicht ca. 840 gr/str. m. Garengeverfd. Afwijkende vezels kunnen voorkomen in lichte kleuren. Kleurverschillen kunnen optreden.

### Zelfkant ↔

**Slijtvastheid:** Ca. 45.000 toeren Martindale EN ISO 12947. **Lichtechtheid** (ISO) 5-7. **Pilling** (EN ISO) 3. **Wrijfechtheid** (ISO) droge 4-5, natte 4. **Brandvrijheid:** EN 1021-1/2 ignition source 0-1. BS 5852 Part 1. BS 5852 Crib 5. DIN 4102 B2. ÖNORM B1 / Q1. UNI 9175 11M. NF D 60 013. US Cal. Bull. 117-2013. NFPA 260. AS/NZS 1530.3. IMO FTP Code 2010:Part 8. EN 13501, C-s1, d0. (Op aanvraag sturen wij u graag een kopie van het testrapport toe).

**Onderhoud** Zie de ISO symbolen. Zonder stoom strijken.

### FR

**Domaine d'utilisation** Tissu d'ameublement pour aménagement privé et public.

**Description** 100% laine vierge. Largeur env. 150 cm. Poids env. 840 g/m lg. Teinture à la pièce. Dans les couleurs claires, présence de fibres étrangères. Ecart des coloris possibles.

### Lisière ↔

**Résistance à l'abrasion:** Env. 45.000 révolutions selon le procédé Martindale EN ISO 12947. **Résistance à la lumière** (ISO) 5-7.

**Boulochage** (EN ISO) 3. **Résistance au frottement** (ISO) sec 4-5, mouillé 4. **Normes au feu:** EN 1021-1/2 source d'ignition 0-1. BS 5852 Part 1. BS 5852 Crib 5. DIN 4102 B2. ÖNORM B1 / Q1. UNI 9175 11M. NF D 60 013. US Cal. Bull. 117-2013. NFPA 260. AS/NZS 1530.3. IMO FTP Code 2010:Part 8. EN 13501, C-s1, d0. (La copie du compte rendu des tests est disponible sur demande).

**Entretien** Voir les symboles ISO. Repassage sans vapeur.

### IT

**Destinazione d'uso** Rivestimento per imbottiti casa e contract.

**Caratteristiche** 100% lana vergine. Altezza circa 150 cm. Peso circa 840 gr/mtl. Tinto in pezza. Nei colori chiari possono essere presenti fibre di tonalità scure. Possibili differenze per colore.

### Cimosa ↔

**Abrasion:** Circa 45.000 cicli/metodo Martindale EN 12947. **Resistenza alla luce** (ISO) 5-7. **Pilling** (EN ISO) 3. **Resistenza allo sfregamento** (ISO) condizione a secco 4-5, condizione umido 4. **Ignifugazione:** UNI 9175 11M. EN 1021-1/2 sorgente 0-1. BS 5852 Part 1. BS 5852 Crib 5. DIN 4102 B2. ÖNORM B1 / Q1. NF D 60 013. US Cal. Bull. 117-2013. NFPA 260. IMO FTP Code 2010:Part 8. EN 13501, C-s1, d0. (Disponibile copia del test).

**Manutenzione** Per favore seguire simboli ISO. Stirare senza vapore.

### ES

**Aplicación** Oficinas, hoteles, instituciones, uso doméstico.

**Descripción** 100% lana virgen. Anchura aprox. 150 cm. Peso aprox. 840 gr/ml. Teñido a la pieza. En los colores claros puede haber fibras de otro color. Posibles variaciones de tintadas.

### Filo ↔

**Resistencia al desgaste:** Aprox. 45.000 ciclos según el método Martindale EN ISO 12947.

**Estabilidad del color a la luz** (ISO) 5-7. **Relleño** (EN ISO) 3. **Solidez al frotamiento** (ISO) seco 4-5, mojado 4. **Resistencia al fuego:** EN 1021-1/2 fuente de ignición 0-1. BS 5852 Part 1. BS 5852 Crib 5. DIN 4102 B2. ÖNORM B1 / Q1. UNI 9175 11M. NF D 60 013. US Cal. Bull. 117-2013. NFPA 260. AS/NZS 1530.3. IMO FTP Code 2010:Part 8. EN 13501, C-s1, d0. (Copia del informe de ensayos disponible).

**Mantenimiento** Consulte los símbolos ISO. Planchar sin vapor.

### JP

**用途** オフィス、ホテル、各種施設、住宅インテリア。  
**詳細** 100% ニューウール。幅:150 cm。重量: 1mあたり約 840 g。製品染め。白色の場合異質繊維が混入する場合あり。色彩ニューアンスに多少の違いが生じる可能性あり。

### 耳、ふち、↔

### テスト

**磨耗:** マーチンデール法により摩擦運動約 45,000 回。EN ISO 12947. **色褪せ保証:** (ISO) 5-7. **ピリング** (EN ISO) 3. **摩擦保証:** (ISO) 乾燥状態 4-5、濡れた状態 4. **耐炎性:** EN 1021-1/2、発火源 0-1. BS 5852 Part 1. BS 5852 Crib 5. DIN 4102 B2. ÖNORM B1/Q1. UNI 9175 11M。NF D 60 013。US Cal. Bull. 117-2013. NFPA 260. AS/NZS 1530.3. IMO FTP Code 2010:Part 8. EN 13501, C-s1, d0. (テストレポートのコピー入手可能。)

### 手入れ

ISO シンボル参照。アイロンはスチームなしでかけてください。

### CN

**适用范围** 办公室、宾馆酒店、公共设施、居家使用。

**成分** 100% 羊毛。幅宽59英寸(150cm)。重量840克/延米，匹染色面料。颜色可能稍有色差。

### 图纹方向 ↔

**马丁代尔法**约45,000转。EN ISO 12947. **光照色牢度** (ISO) 5-7. **起毛起球** (EN ISO) 3. **磨擦色牢度** (ISO) 干燥4-5, 湿4. **阻燃性:** EN1021-1 / 2时点火源0-1. BS 5852 Part 1. BS 5852 Crib 5. DIN 4102 B2. ONORM B1/Q1. UNI 9175 11M. NF D 60 013. US Cal. Bull. 117-2013. NFPA 260. AS/NZS 1530.3. IMO FTP Code 2010:Part 8. EN 13501, C-s1, d0. (可提供测试报告副本)。

**维护** 请参照ISO标志。可熨烫但要避免蒸汽。



10 year  
warranty